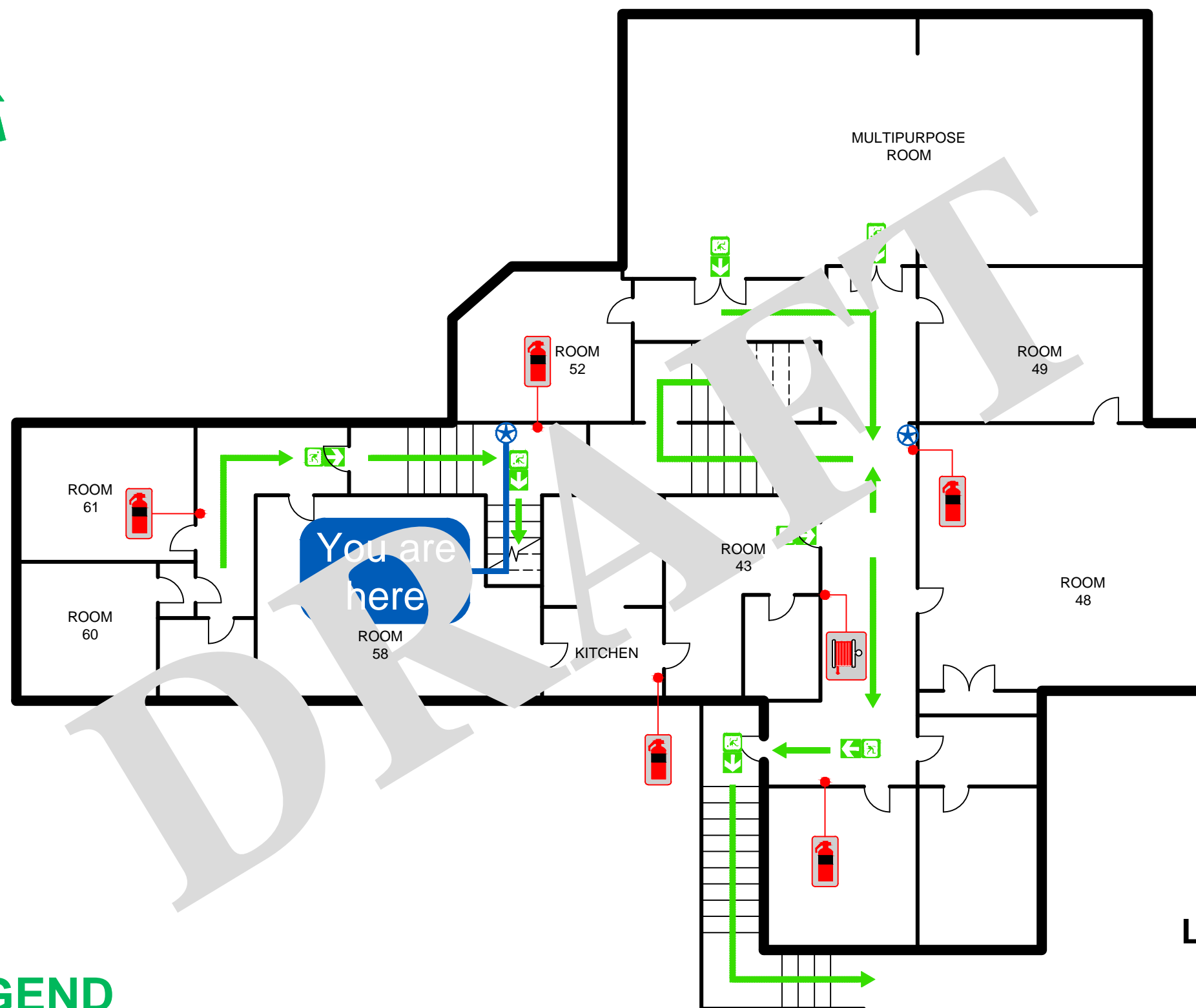


EVACUATION DIAGRAM

WOODSTOCK COMMUNITY CENTRE
22 CHURCH ST, BURWOOD NSW 2134



LEVEL 1

LEGEND

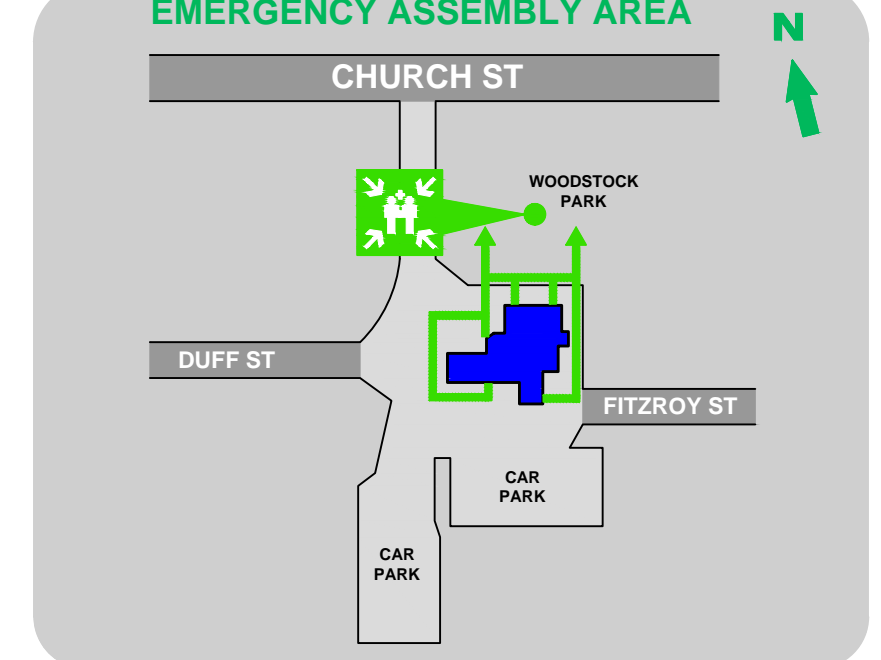


Location of YOU ARE HERE INDICATOR
(shown only temporarily, later it will be removed)

EVACUATION PROCEDURE

- R REMOVE** → REMOVE ALL OCCUPANTS AND STAFF AWAY FROM THE DANGER. DO NOT BLOCK EXIT OR EXIT ROUTES.
- A ALERT** → ALERT THE FIRE SERVICE. TELEPHONE "000". NOTIFY THE WARDEN OR CHIEF WARDEN AND PEOPLE AROUND AS SOON AS POSSIBLE. IF POSSIBLE RAISE AN ALARM TO NOTIFY OTHERS.
- C CONTAIN** → CONTAIN THE DANGER (FIRE) WHERE POSSIBLE TO DO SO, WHERE SAFE TO DO SO AND IF TRAINED TO DO SO. FOR e.g. CLOSE DOORS AND WINDOWS, SELECT AND USE CORRECT EXTINGUISHER OR IF AVAILABLE USE FIRE HOSE REEL etc.
- E EVACUATE** → FOLLOW (CHIEF) WARDEN'S INSTRUCTION, USE FIRE STAIRS WHERE AVAILABLE, TAKE NEAREST AND SAFEST EXIT, DO NOT USE LIFT, EVACUATE IMMEDIATELY, SAFELY AND DO NOT RUN. GO TO THE ASSEMBLY AREA.

EMERGENCY ASSEMBLY AREA



Prepared by:
Newsound Fire Services
Contact: 02 9646 2455
www.newsound.com.au



Date Prepared: 6-Feb-2024
Validity 5 years

To be printed in A3 size
NOT TO SCALE