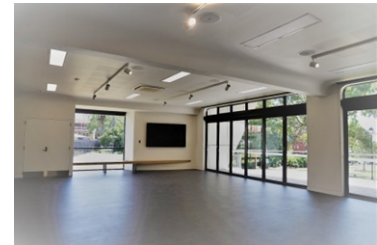




BURWOOD PARK COMMUNITY CENTRE INFORMATION SHEET



For specific conditions relating to the hire of Halls and Community Centres, refer to Burwood Council's Hire of Community Centres and Council Chambers.

To make a reservation, please contact Community Facilities Officer at Burwood Council on 9911-9911 or email: council@burwood.nsw.gov.au

LOCATION	2B COMER STREET BURWOOD (WITHIN BURWOOD PARK, BEHIND PAVILION STAGE)	
Room	Single storey	
Operating Hours	Sunday to Thursday	8.30am to 11.00pm
	Friday and Saturday	8.30am to 12.00am
Capacity	Maximum 80	
Table Quantity	Ten	
Shape	Rectangular	
Size	1600mm x 800mm	
Chair Quantity	60	
Size of Room	Approx. 13m x 9m	
Air Conditioning	Reverse cycle	
Toilets	Male, female & accessible (with shower)	
Floor Covering	Vinyl	

Facilities	<p>84" HDMI-ready TV</p> <p>Microphone</p> <p>Lectern</p> <p>Whiteboard</p> <p>Break-out area on balcony</p>
Alcohol	Yes, RSA certificate required
Parking	Limited on-street parking
Access Instructions	PIN number required for entry to premises
Security	All doors are to be locked on leaving premises
Kitchenette	<p>Instant Hot Water System</p> <p>Sink, storage and workbench</p> <p>Microwave</p> <p>Fridge</p> <p>Cutlery, plates or cups are not provided</p> <p>Cooking facilities are not provided</p>
Conditions	<p>Lights and air conditioning must be turned off at completion</p> <p>All chairs and tables are to be stacked and folded away, then returned to the storage cupboards</p> <p>Hirer is responsible for general cleaning of the premises</p>
Travel times from Burwood Train Station	<p>Car: 3 minutes</p> <p>Public transport: 5 minutes</p> <p>Walk: 8 minutes</p> <p>Cycle: 2 minutes</p>
Note	<p>Burwood Park can be reserved at council@burwood.nsw.gov.au</p> <p>BBQs and playground located in Burwood Park</p>