

Sustainable Burwood

Corporate Document

Adopted by Council or Approved by the <General Manager>
<Date>

Ref. No.: <Content Manager Ref. No.>
Ownership: Environment and Health

PO Box 240, BURWOOD NSW 1805
2 Conder St, BURWOOD NSW 2134
Phone: 9911 9911 Fax: 9911 9900
Email: council@burwood.nsw.gov.au
burwood.nsw.gov.au



.....

Contents

Sustainable Burwood Strategy	2
Mayors Message	3
GM message	3
1. Sustainable Strategy Outline	3
2. Facts and Considerations	3
3. Outcomes from the Existing Green Action Plan	4
4. What the community told us	5
5. Our Vision for Burwood	5
Our Big Moves	6
6. Where our Plan Fits	6
7. Themes and Action Plan	7
Theme 1: Natural Environment	7
Theme 2: Built Future of Burwood	9
Theme 3: Being Connected and Resilient	12
Theme 4: Leading Burwood	13
8. Measuring and Reporting	16
9. Our Plan	17
10.Related Documents	19
Review	19
Contact	19

DRAFT

Message from Burwood Council

Burwood Council is pleased to present 'Sustainable Burwood' for your review and comments. Sustainable Burwood follows on from and builds on Council's Green Action Plan which was originally adopted in by Council in 2008.

Sustainable Burwood provides a framework for sustainable planning and decision making to achieve and improve on positive environmental sustainability outcomes for the Burwood Council area.

Sustainable Burwood has been developed and focusses on community issues, matters and feedback that you, the community, gave us through a consultation and engagement process that was conducted in the lead up to the development of 'Sustainable Burwood'.

'Sustainable Burwood' is now open for your review, comments and input. All comments and suggestions will be considered and the final draft with any necessary amendments of 'Sustainable Burwood' will be submitted to Council for approval in early 2022.



1. Sustainable Outline

Sustainable Burwood provides a framework for sustainable planning, decision making and action to achieve improved environmental sustainability for the Burwood Local Government Area.

Our environment is important in maintaining a healthy, sustainable and safe lifestyle. It is the responsibility of Council and all the community to protect, preserve and enhance the environment not only for the present but for future generations.

The purpose of Sustainable Burwood is to build on the existing Green Action Plan 2012 and the delivery strategies outlined in Council's long term community strategic plan. It is also important to acknowledge that our collective understanding of this issue has broadened since Burwood Council adopted the Green Action Plan. At the time focus was given to environmental protection. The introduction of the Sustainable Burwood Strategy reflects a more encompassing understanding of the topic. It cuts across environmental protection, reducing pressure upon finite resource and also maintaining the wellbeing of our community. The strategy presents how we will achieve sustainable and balanced outcomes for, and with our community.

The Burwood2030 Community Strategic Plan 2018, states that the community's long term vision for Burwood is:

“a well connected, innovative, sustainable and safe community that embraces and celebrates its diversity”.

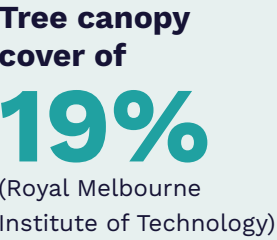
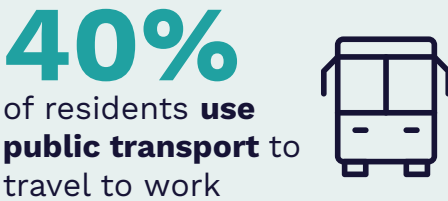
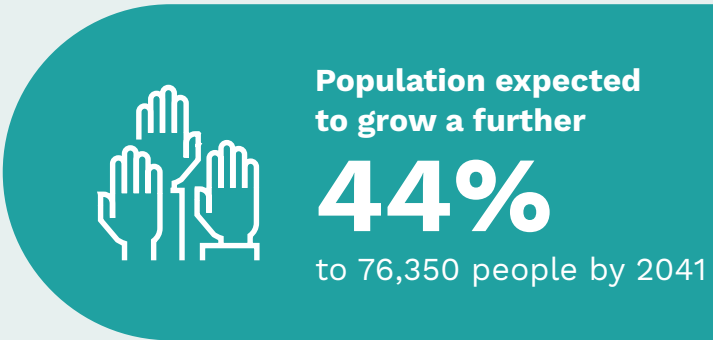
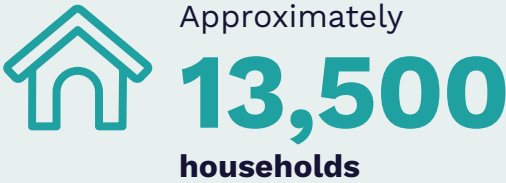
A summary of the strategic goals from the Community Strategic Plan (CSP) for the Healthy and Sustainable Environment theme are:

- 3.1 Enhanced green and open spaces, and streetscapes
- 3.2 Sustainable waste management practices
- 3.3 Community education on sustainable practices
- 3.4 Leadership in environmental sustainability
- 3.5 Public health and welfare



2. Facts and Considerations

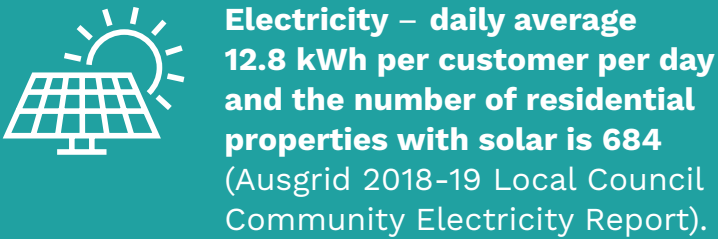
Burwood is undergoing rapid change with regards to population growth, community demographics, housing options and business profiles. Some essential data includes:



On average, each person in Sydney uses about **200 litres** of drinking quality water every day (Sydney Water)



Expected continual increase in waste generation
(in 2019/2020 there was 8,000 tonnes of general waste, 2,161 tonnes of recycling and 2,341 tonnes of green waste)



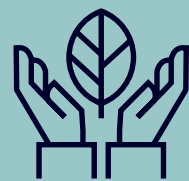


A growing and evolving community will place new demands on local infrastructure and services.

The way in which these demands are managed can reduce the impact upon the availability and use of local resources. It is important that as the community grows there is work undertaken to anticipate what those new demands might be. As the Burwood community continues to grow some of these challenges might include:



A growing population will lead to a higher demand for energy, water and transport. It is important that efficient and equitable access and use of these resources is promoted.



Continued development and urban consolidation increases the communities need for access to usable open space suitable for a range of activities and users. Green infrastructure and a connected open space network will become increasingly important.



Increasing impact of waste disposal and management across Greater Sydney. The need to reduce, reuse and recycle is a key strategy to ensure material is diverted from landfill and retained in purposeful use.



Communities are becoming aware of climate change patterns with Australia already experiencing warmer temperatures, increasingly frequent severe events such as bushfires, storms and flooding. action to tackle climate change.

3. Outcomes from the Existing Green Action Plan

The Green Action Plan (2012) has resulted in many new programs and initiatives during the life of the plan. Highlights included:

- Successful grant for solar hot water systems on eight Council owned buildings
- Successful grants (two) for NSW EPA Bin Trim program
- Delivery of 120 free sustainable and waste wise workshops and events to community members and residents
- Delivery and promotion of annual Second Hand Saturday events
- Alternative disposal / recycling options of problem waste items for community members and residents
- Burwood Council has partnered with the NSW EPA and City of Canada Bay to provide the Burwood and Canada Bay Community Recycling Centre
- Delivery of over 300 free sustainable and waste reduction presentations to Primary Schools and Early Learning Centres annually across the LGA
- Assistance to over 130 Strata Committees and Building Managers throughout the LGA with bin bay signage and bin stickers



- Undertook a Composting trial in Apartment Buildings Pilot Program in four apartment blocks diverting around 160kg of organic material from landfill
- Diverted 4000 mattresses from landfill that have now been recycled for other purposes
- Over 1000 trees planted under the Mayors Tree Planting Program during 2020-21
- Replacement of hard surfaces on verges and roundabouts with plants and grasses
- Rehabilitation of a former brick works and creation of 4.2 hectares of new open space to form Wangal Park

4. What the community told us

Council conducted community engagement consultation in developing this strategy, which saw 135 online survey responses received and 75 community members attend community consultation stalls. From this, we assessed all responses and submissions and developed the key themes, actions and goals.

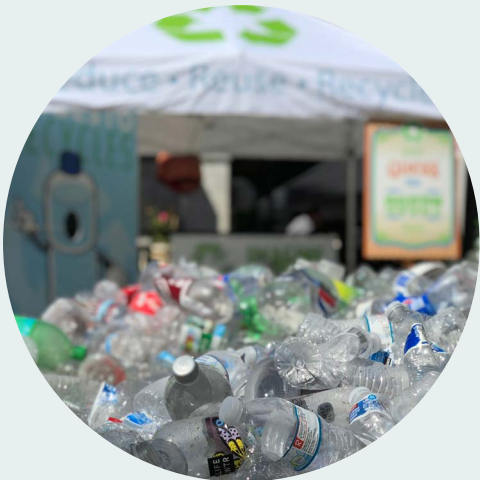
At the community consultation stalls and the online survey we asked ‘what should Council be doing?’

Here is what you told us:

- FOGO (Food Organics Garden Organics) collection service
- More trees – appropriate shade trees, big canopy and climate resilient
- Help residents learn about solar energy and batteries
- Good, safe, connected bike lanes for children with access to shopping centres
- Composting facilities for industrial / commercial customers
- 100% renewable electricity
- Council Fleet vehicles should all be electric
- Pedestrianise Burwood Road (reduce urban heating, improve pedestrian & bike access)
- Establish community gardens
- Organisational Key Performance Indicators linked to net zero and sustainability plans
- Provide all employees with training in climate change mechanisms



You also told us your top priorities for Burwood were:



Waste management focused on reduce, reuse and recycle



Improving air, noise and water pollution



Promoting new renewable energy opportunities



Responding to Climate change and its effects



Improving public transport, pedestrian environment and reducing traffic congestion

5. Our Vision for Burwood

It is important that there is a clear vision for Burwood Council that will underpin the delivery of the Sustainable Burwood Strategy. Combined with the identified ‘big moves’ the vision is a statement about what the future looks like for Burwood, both as an organisation and a community.

Towards Net Zero Emissions:

Council will continue to strive toward net zero emissions and support the community in achieving this target. Council will continue to make balanced decisions to support this outcome.



Increase and enhance green open space:

Council will seek creative and innovative ways to provide new green spaces and will work with NSW Government and private sector to achieve this outcome.

Early adopter of new Sustainability Initiatives:

Burwood Council is an agile organisation that can adapt quickly to new technologies and policy. We will continue to seek opportunities for appropriate new sustainable practices.



Our Big Moves

There are four core areas identified which are directly within the control of Council and represent areas which can have an immediate and lasting impact in terms of delivering the objectives of the Sustainable Burwood Strategy.

By targeting these key ‘big moves’ Council is also able to cut across multiple issue and offer sustainability improvements across many of the identified themes within the plan.

The Burwood Council ‘Big Moves’ are:



Reduce, Reuse & Recycle:

Reduction in waste creation and diversion of materials from landfill represents a key target. Shifting just 10% of generated household waste would divert 800 tonnes of material from reaching landfill.



Reduce our Carbon Footprint:

By making strategic decisions now and reviewing our current operational practices – there are simple steps that can be made to reduce Council’s carbon footprint.



Green Infrastructure:

Burwood Council is a growing area and new population will increase pressure on our existing open spaces. By maximising new green infrastructure and enhancing our existing open spaces, Council can increase the usability and accessibility of our parks and provide the cooling effect of new street trees and landscaping within our urban places and spaces.



Community Led Participation:

Many of the actions within this plan will only be successful with a high level of community participation and acceptance. Engagement with the community throughout the life of the strategy will ensure a high level of and participation and acceptance of new initiatives. This is to also encourage community to adopt sustainability initiatives into their own lives.





6. Where our Plan Fits

Sustainable Burwood is a local plan but it supports and flows from global, federal and state government goals and strategies. Sustainability is a global issue and success is reliant upon everyone contributing to a common goal.

Council acknowledges the United Nations Sustainable Development Goals as a blue print for achieving a better and more sustainable future for all. There are 17 interconnected goals addressing not only environmental aspirations but also social issues.

The United Nations Sustainable Development Goals are:



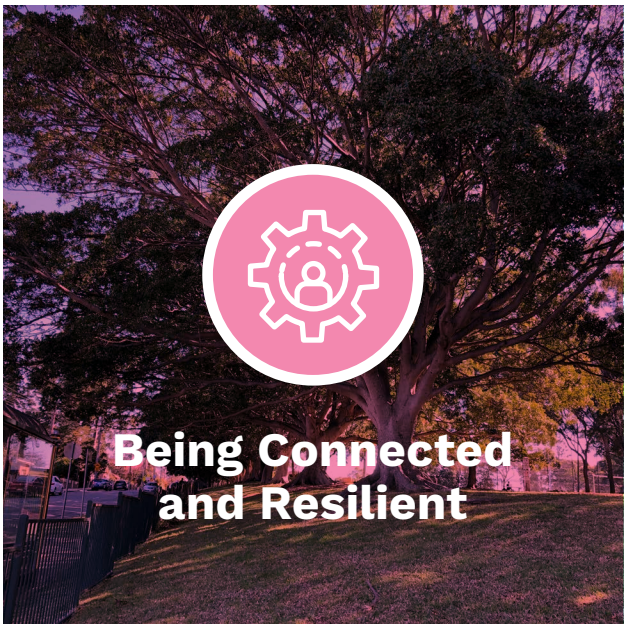
Aligning Burwood Council’s priorities, as stated in the strategy to the United Nations Sustainable Development Goals:

3 GOOD HEALTH AND WELL-BEING 	To ensure healthy lives and promote well-being for all at all ages
7 AFFORDABLE AND CLEAN ENERGY 	Ensure access to affordable, reliable, sustainable and modern energy for all
11 SUSTAINABLE CITIES AND COMMUNITIES 	Make cities inclusive, safe, resilient and sustainable
12 RESPONSIBLE CONSUMPTION AND PRODUCTION 	To ensure sustainable consumption and production patterns
13 CLIMATE ACTION 	Take action to combat climate change and its impacts



7. Themes and Action Plan

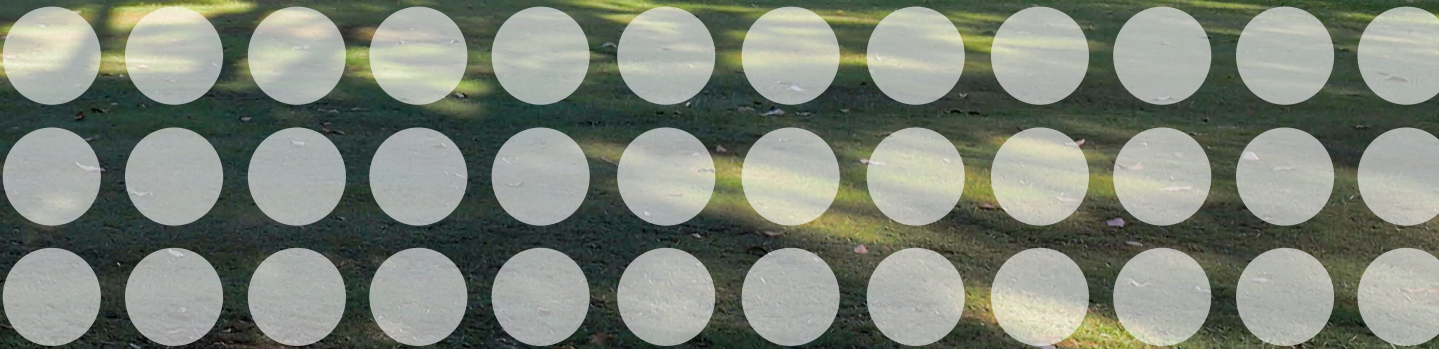
The Sustainable Burwood Strategy has been developed around four themes with supporting actions that will be investigated and implemented through the life of the plan. The key themes are:



Theme 1: Natural Environment

The natural environment supports the health and wellbeing of the community, providing benefits such as access to active and passive recreation areas and supporting social connections in urban areas. As a largely urban area, open spaces are important for the community as places to relax and enjoy. However, this also creates a challenge as providing new open space is difficult to achieve. Burwood Council will need to consider innovative delivery models that include working with NSW Government and the private sector to offer a range of new open spaces and greener environments.

Another important aspect of the natural environment is the preservation and enhancement of biodiversity. As a highly urbanised environment and every effort should be made to improve biodiversity and the quality of urban habitats through plans, projects and partnerships aimed at preserving and enhancing biodiversity.



Theme 1: Natural Environment

Promoting Green space and Urban Tree Canopy

Burwood along with the rest of metropolitan Sydney is set to experience a changing climate. Burwood will become warmer and more liable to extreme heat events. Urban tree canopies will play a critical role in creating a healthy environment. They improve air quality, provide shelter and cooling and support wildlife.

Burwood contains numerous public open space parks and reserves and street trees covering 19% of the Council area.

Council will support and enhance the urban canopy to benefit the health and wellbeing of the community. Council will also work to identify opportunity to create new publically accessible open space with the private sector particularly in the Burwood Town Centre. This might include new public plazas, accessible roof tops or other green infrastructure.

OUR TARGET

- Improve the quality and quantity of our green and public spaces
- Increase tree canopy cover through Council’s ‘1000 Trees Program’
- Continue the replacement of hard surfaces on verges and roundabouts with soft landscaping (plants, flowers and grasses) and include soft landscaping in any new intersection/roundabout

OUR GOALS

- Increase tree plantings across the Council area on public and private land
- Increase access to a range of green, urban and civic open spaces across the community

OUR PROGRESS

- Over 1000 trees have been planted through the Trees Program. As one of the most important assets, the 1000 trees will consist of 60% native and 40% exotic species to enhance the local tree canopy and biodiversity in the area.
- The finalisation of Wangal Park located in Croydon. Wangal Park is 4.2 hectares in size and is intended as a refuge from the surrounding urban environment with trees, native plant species, fauna habitat and a wetland
- Delivering National Tree Day events for schools and the community
- Responding to tree planting, pruning and removal requests

OUR PRIORITIES

- Increase annual tree plantings on public and private land
- Ensure diversity in our street tree species for longevity and ability to withstand pests, disease and temperature fluctuations
- Review development controls to protect existing trees and increase opportunities for new ones
- Promote the provision of publically accessible open space within private development, including increased street tree planting and urban open spaces
- Encourage the use of green walls and rooftop gardens or other publically accessible open spaces as an integrated feature of new built development



Theme 1: Natural Environment

Waterways / Stormwater

A healthy environment is supported by healthy waterways. Burwood is an urbanised area with hard surfaces such as roads, carparks, driveways, roofs and paving. Stormwater run-off from these hard surfaces accumulates pollutants and can have a negative impact upon water quality in downstream catchments.

With our increasing population, Council will play a vital role in managing the impacts of urban development on our waterways through the use of water sensitive urban design and infrastructure.

OUR TARGET

- Assist and contribute to improving the water quality of the Cooks River and Parramatta River catchments and improve the management of stormwater within our communities.

OUR GOALS

- Improve water quality in both the Cooks River and Parramatta River
- Promote and increase water sensitive urban design principles on public and private land

OUR PROGRESS

- Active participation in the Cooks River Catchment Group
- Contribution to the Parramatta River Catchment Group – Our Living River initiative
- Undertake compliance initiatives to reduce pollution entering the rivers from polluted stormwater run off
- Community water workshops

OUR PRIORITIES

- Continued involvement with Cooks River and Parramatta River Catchment Groups
- Continued compliance initiatives to reduce pollution entering both Cooks and Parramatta Rivers
- Participation in the Zero Litter to River initiative. Council endorsed the Zero Litter to River target, by 30 June 2030 in September 2019
- Investigate opportunities for increased application of water sensitive urban design principles



Theme 2:

Built Future of Burwood

Buildings have a notable impact on climate change and our Council area requires future sustainable designs that use less energy, water and resources. This will assist the community to reduce the consumption of energy, water and improve waste diversion and recovery.

Burwood Town Centre will experience continued growth with new residential and commercial development forecast to continue over the next decade. It is vital that new development supports the growth of new communities in a positive way by providing high quality places and spaces for residents. Also, future building design must align to reduce energy consumption, reduce waste generation and increase resource recovery at the point of collection. Our community needs to consume less, recover more and explore new technologies to support this. This means that specific strategies need to be adopted that respond to forms of medium and high rise living that are emerging in our communities.



Theme 2: Built Future of Burwood

Improving Energy Efficiency

Council will support the community in reducing energy consumption to mitigate the impacts of climate change. With an increasing population, the carbon footprint of the community will increase in response to that growth. However, there is opportunity now to create sustainable communities in order to mitigate the increase in energy consumption.

OUR TARGET

- Net zero emissions by 2050 (community)

OUR GOALS

- Assist the community to reduce their emissions
- Burwood Council will lead by example by using energy more efficiently and reducing our emissions as an organisation
- Targeted energy efficiency education and promotional campaigns to the community
- Support sustainable building design outcomes and legislative changes to mandate sustainable construction practices

OUR PROGRESS

- Supported the NSW government's Home Power Savings Program which delivered free energy audits to eligible residents
- Community engagement programs such as workshops in English and Mandarin
- LED lights replaced on all local roads, with better lighting, efficiency and durability

OUR PRIORITIES

- Explore opportunities for community based renewable energy projects
- Encourage and incentivise the switch to electric vehicles with appropriate policy, financial or other controls
- To educate and promote opportunities for energy efficiency and the switch to renewable energy generation to the community
- Explore opportunities for improved sustainable building design outcomes and support legislative updates to Building Code requirements





Theme 2: Built Future of Burwood

Efficient Water Usage

Water is an important resource to our community. It maintains our environment and is necessary for a healthy community. Drought conditions across Australia have caused us to consider how best to manage water usage in response to increasingly severe restriction.

With our expected population growth and the impacts of climate change, water demands will also grow. We must conserve water as a community to alleviate the impacts of climate change and drought proof our Council area. Residential water consumption contributes to this and we need to explore options such as installing rainwater tanks, grey and black water systems and planting of drought proof/tolerant plant species to improve water efficiency.

OUR TARGET

- Is to support the community to reduce potable water consumption, targeting no net increase on average household annual water consumption based on 2018/19 levels

OUR GOALS

- Support the community to reduce potable water consumption
- Continue to work with government and industry to identify infrastructure and future technologies to support water reduction for our community

OUR PROGRESS

- Hosted workshops for the community on water wise gardening
- Promotion of government programs supporting the installation of and financial assistance with rainwater tanks

OUR PRIORITIES

- Provide sustainability education programs to reduce potable water consumption in the community
- Communicate Sydney Water's restrictions and water efficiency initiatives to the community
- Keep up to date on new initiatives and technologies for water recycling which support a reduction in potable water consumption

Theme 2: Built Future of Burwood

Effective Waste Management

Council is committed to the sustainable management of waste. Our focus is to avoid waste going to landfill through the provision of services such as dry recycling, separate green waste collections and scheduled clean up services. Another focus is to reduce illegal dumping and litter through targeted programs. All households are provided with waste, recycling and garden organics collection service including two council clean-up services per year.

Council's current diversion rate for household waste is 46% indicating there are opportunities to increase resource recovery. This represents 5000 tonnes of material being diverted from landfill each year.

Litter management is essential to clean and healthy waterways, parks, open spaces and streets. Litter causes a variety of impacts on the natural environment. Including waterway pollution, visual amenity issues in parks, open spaces and streets.

Illegal dumping is a problem, especially around multi-unit developments. Council actively engages with residents providing education and alternative options on eliminating illegal dumping of furniture, mattresses, building/household renovation material and e-waste.

OUR TARGET

- Reduce the total waste generated by 10% per person by 2030 (NSW EPA Waste & Sustainable Materials Strategy 2041)
- Halve the amount of organic waste sent to landfill by 2030 (NSW EPA Waste & Sustainable Materials Strategy 2041)
- Reduction in litter in hotspots by 50%

OUR GOALS

- Work with residents to reduce kerbside recycling contamination
- Reduce illegal dumping and littering
- Reduce emissions from waste through increased diversion from landfill
- Encourage the community to purchase less, use what they have and seek sustainable alternatives
- Improve our data collection, monitoring and reporting

OUR PROGRESS

- Launched the Burwood Waste Info App providing up-to the minute information on waste collection services. Currently just over 1000 residents have downloaded the app.
- Delivered 300 waste education sessions for schools and early learning centres
- Offering best practice kerbside collection services for waste, recycling and garden organics including two annual household clean ups
- Community engagement on waste reduction and diversion through education workshops
- Working with managing agents and strata agents to reduce illegal dumping particularly from multi-unit developments

OUR PRIORITIES

- Introduce a FOGO (Food Organics Garden Organics) collection service to all residential properties in the LGA
- Continue to deliver community education programs focussing on waste avoidance, reuse, repair and recovery
- Carrying on forming partnerships and seek opportunities for the community to improve recycling such as The Bower's Rehoming and Collection Service
- Maintain enforcement of illegal dumping and litter hotspots and deliver a street sweeping and cleaning maintenance service
- Increase waste diversion from landfill through new technologies and innovations
- Work with the commercial community to reduce business waste and improve recycling practices including reliance on single use plastics

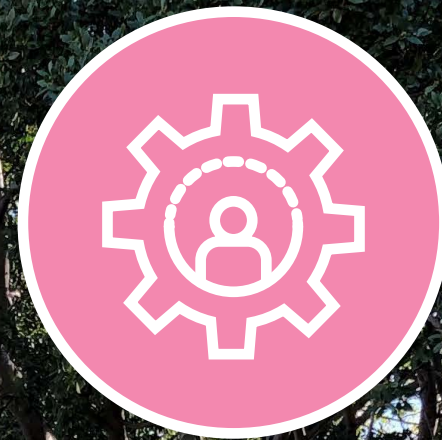


Theme 3:

Being Connected and Resilient

With a growing population and as our Council area transforms there is a need to ensure our community remains connected and resilient. This means fostering a caring and welcoming community that values the changing and diverse population around it. Burwood Council needs to be mindful of these changes too and ensure that services are delivered in a culturally responsive and ethical way.

There is also a need to support our communities to be resilient to global changes. Climate change, economic crisis, urban heat effect and other factors will influence our community to varying degrees. The impact of COVID-19 has been felt around the world and has radically impacted the daily lives of many communities. Burwood has been no exception of this, however the impact of such external factors can be reduced through the ability to respond and adapt to new ways of living and working.



Theme 3: Being Connected and Resilient Responding to Climate Change

The focus in terms of preventing climate change is to reduce greenhouse gas emissions (GHG). Climate change will affect us with extreme rainfall events are expected to become more intense, hotter and drier conditions will lead to harsher bushfire weather, heatwaves will become hotter and longer, potential severe thunderstorm days are expected to increase, higher sea levels will increase flooding in coastal cities and towns and droughts are likely to happen even more often (source Climate Council).

OUR TARGET

- Is to strengthen the community's resilience and adaption capacity to climate change related hazards through improved education and awareness

OUR GOALS

- Improve liveability through cooling and heat reduction measures such as increased urban tree canopy
- Minimise the impact of flooding to the Burwood community
- Educate the community on key climate change risks and develop strategies to respond to them
- Work closely with the most vulnerable groups to the impacts of climate change in the community, such as elderly, young children, those caring for/with chronic disease and low mobility

OUR PROGRESS

- Council has delivered numerous actions to increase the resilience and liveability of the Council area including development of detailed studies on flood impacts
- Development of the Burwood Cares program during the covid-19 pandemic. This program provided support to local residents and businesses, finding effective ways to keep everyone safe, supporting isolated residents and struggling businesses

OUR PRIORITIES

- Ensure resilience is integrated across Council through considering climate change risks in our daily operations
- Work with the community on engagement and communication relating to climate risk and responsibilities
- Support businesses with the development of

agile working practices that allows them to be responsive to unforeseen events

- Keep up to date with latest science, research and best practice





Theme 3: Being Connected and Resilient

Encouraging Sustainable Transport

Transport has a significant impact on the environment, including local air quality, noise levels and greenhouse gas emissions. It is important Burwood offers quality walking, cycling and public transport opportunities. Having these options available assists to reduce local congestion, improve health and reduce carbon emissions and pollution.

Burwood is also in a unique position to be serviced by both existing rail and bus services, and future metro services with the advent of the Burwood North Sydney Metro Station. This will offer a huge variety of choice and accessibility to high frequency, reliable and high quality public transport services. In turn this offers the ability to create connected transit orientated communities, with residents leaving the private vehicle at home, in favour of fast and convenient public transport services.

OUR TARGET

- Promote the creation of safe and high quality streets to promote walking and cycling across the Council area.
- Promote alternative technologies or services, such as car share schemes, as an alternative to private vehicle ownership

OUR GOALS

- Improved walkability and pedestrian friendly streets
- Increase in cycleway accessibility and availability
- Improved access to active transport options

OUR PROGRESS

- Continue to promote active transport choice across the community with peak hour trips exceeding 40% into the future
- Secured the location of the Burwood North Metro Station
- Bus shelter upgrades with improved weather protection and visibility across the LGA
- Supported infrastructure upgrades at Croydon and Burwood railway station to provide improved passenger experience and all mobility's access. lifts, accessibility

OUR PRIORITIES

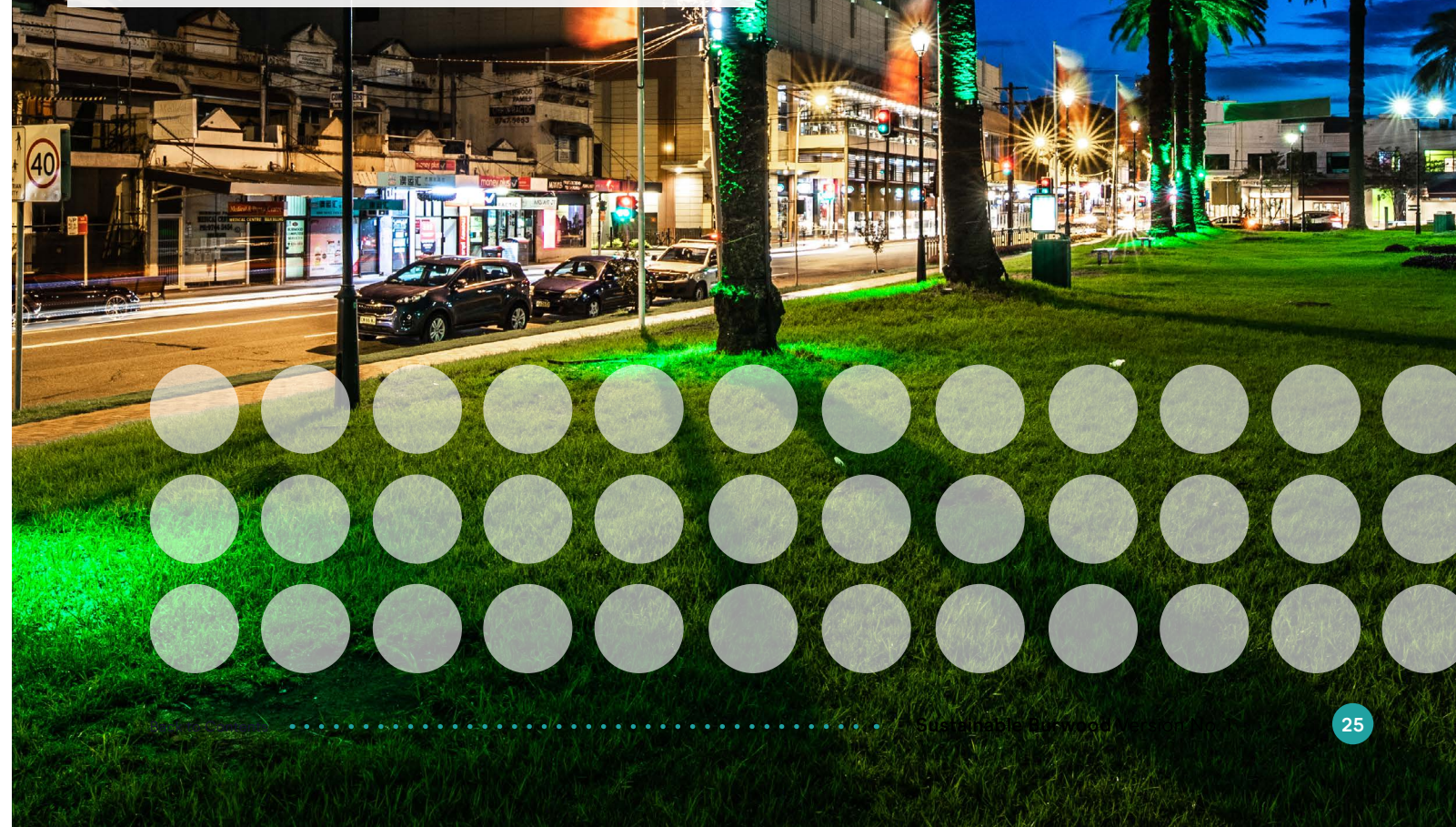
- Collaborate with NSW Government and Sydney Metro in the delivery of a thriving metro station precinct at Burwood North
- Undertake planning to support the delivery of new transit orientated communities
- Review planning and development controls for electric vehicles and car share options to reduce reliance on private vehicle ownership and fossil fuel based vehicles
- Planning and installation of more cycleways to connect with surrounding cycle corridors

Theme 4:

Leading Burwood

To start addressing the issue of climate change, everyone has to do their bit. Burwood Council recognises that we must also work hard to reduce the environmental impact of our operations and service delivery and this means adopting sustainable practices across the organisation. Burwood Council has a responsibility to be a leader in terms of demonstrating to the community the availability and benefits of new sustainable ways of living and working.

Burwood Council is also uniquely placed to respond quickly to new initiatives and technologies that offer sustainability improvements. As a smaller Council and defined geographically area, this is an agility that can be used to test, trial and then adopt new approaches to service delivery.



Theme 4: Leading Burwood

Sustainable Partnerships

It is recognised that in order to achieve the vision of the Sustainable Burwood Strategy, Burwood Council needs to create partnerships. This may cover a number of areas and include access to new ideas, technology or innovation. Alternatively, it may include the use of external organisations to assist Council to monitor progress in the achievement of identified targets.

OUR TARGET

- To continue to identify and work with external organisations that will assist Burwood Council in delivering the Sustainable Burwood Strategy
- Development partnerships with external providers, research organisation or Universities that would allow the testing of new technologies or initiatives

OUR PROGRESS

- Council has and will continue to engaged Azility to monitor and report on our energy and water performance for analysis and reporting.
- As a member of the Southern Sydney Regional Organisation of Councils (SSROC), working on joint initiatives and projects such as the Paving the Way project where recycling 100 million glass containers per year into local roads.
- Partnered with the NSW EPA and City of Canada Bay to offer additional recycling and disposal options at the Community Recycling Centre located at Regatta Road, Five Dock
- Partnered with The Bower to allow residents and community members access to the Rehoming and Collection service

OUR PRIORITIES

- Continue to work with SSROC to showcase new sustainable technologies, policies and procedures
- Work with external providers to seek opportunities to enter into circular economy networks
- Enter into a partnership with an external organisation to independently monitor achievement of key performance targets

Theme 4: Leading Burwood

Energy Efficiency

Energy efficiency is using less energy to perform the same task. Energy efficiency provides a variety of benefits including reducing greenhouse gas emissions, reducing demand for energy and lowering our operational costs. During 2020-21 Burwood Council electricity usage was 3,094,155 kWh.

OUR GOAL

- Is to reduce energy use, implement efficiency measures and utilise renewable energy sources such as solar PV, solar hot water to reduce community and carbon emissions.

OUR TARGET

- Net zero emissions by 2030 (council)
- 30% of Council power to be from renewable energy sources by 2030

OUR PROGRESS

- Tracking our emissions through an online environmental management systems
- Installation of solar PV at Enfield Aquatic Centre with a PV area of 413 m3
- installation of solar PV hot water systems on eight council owned properties and buildings
- installation of solar PV lighting in parks and open space walking corridors

OUR PRIORITIES

- Source energy suppliers with green power initiatives
- Sign up and commit to the Cities Power Partnership program
- Work with SSROC on energy saving programs/ initiatives



Theme 4: Leading Burwood

Water Management

It is important for Council to work to implement best practice water management given the number of Council operations and services which have high water usage demands. For example the need to maintain high quality parks, open spaces and sporting fields creates additional water consumption. But without at least some level of irrigation, our parks would suffer. Council will investigate Water Sensitive Urban Design (WSUD) approach to the management of water within the Burwood Council area. The benefits of adopting a WSUD approach include protection of water quality in our waterways by improving draining from developments, reduction in runoff across the Council area and minimising potable water consumption through reuse options, where necessary.

OUR GOAL

- Is to reduce potable water consumption across Council operations and increase capture of water for Council use

TARGETS

- 25% reduction in potable water consumption (based on 2020-21 water consumption of 32.751 kL)

OUR PROGRESS

- Improvements to the water efficiency at Enfield Aquatic Centre
- Our online environmental monitoring program detects potential leaks to ensure water is not unnecessarily consumed

OUR PRIORITIES

- Prepare a Water Efficiency Plan
- Continue to monitor our high water usage sites and adopt alternative practices when necessary
- Investigate alternative options to capture potable water and seek opportunities to harvest stormwater
- Ensure irrigation systems are efficient and investigate new innovations relating to irrigation
- Work with Sydney Water to monitor and maintain the water infrastructure in Burwood LGA

Theme 4: Leading Burwood

Sustainable Procurement

Council is committed to the consideration of the impacts the purchasing of goods and services have on our environment during their lifetime and what and how they are recycled/disposed of when we no longer require them. Council educates staff and suppliers on these requirements.

A key example is fleet management. Fossil fuels, including petrol and diesel are significant contributors to Council's emissions profile. The introduction of hybrid vehicles to Council's fleet, continued maintenance of the fleet (cars and trucks) and investigate adopting new technologies like electric vehicles will help to reduce our emissions.

OUR GOAL

- Is to ensure sustainable considerations for all procurement decisions

TARGETS

- Reduce energy and fuel consumption across Council operations

OUR PROGRESS

- Council has incorporated sustainable procurement into the Procurement and Purchasing Policy
- Council collaborates in joint tendering processes with other Councils, particularly through SSROC, to gain greater purchasing power and savings

OUR PRIORITIES

- Expand on sustainable procurement within the Procurement and Purchasing Policy.
- Add sustainable procurement consideration to all project briefs and tender evaluations.
- Increase the fleet of hybrid or all electric vehicles. Including investigation into the transition to non-fossil fuels for heavy and operational vehicles and equipment. Continue collaboration with SSROC to identify sustainable purchasing opportunities to deliver high quality services and greater purchasing options

8. Measuring and Reporting

Council has engaged environmental monitoring firm Azility to measure all aspects of Council environmental footprint and outputs so we can monitor improvements and recognise and correct shortcomings where appropriate.

The themes measured include energy use (including gas), water consumption, fleet fuel use and waste generation. Council has quarterly reporting sessions with Azility to confer on progress.

The Burwood Sustainable Strategy will be reviewed every four years and annually we will report to the community on how we are progressing towards our targets and goals.

Sustainability is an evolving and interconnected area where there are regular innovations resulting in changes to policies, programs and reporting to occur.



9. Our Plan

Council has engaged environmental monitoring firm Azility to measure all aspects of Council environmental footprint and outputs so we can monitor improvements and recognise and correct shortcomings where appropriate.

The themes measured include energy use (including gas), water consumption, fleet fuel use and waste generation. Council has quarterly reporting sessions with Azility to confer on progress.

Sustainable Burwood will be reviewed every four years and annually we will report to the community on how we are progressing towards our targets and goals.

Sustainability is an evolving and interconnected area where there are regular innovations resulting in changes to policies, programs and reporting to occur.



Vision

Towards Net Zero Emissions: Council will continue to strive toward net zero emissions and support the community in achieving this target. Council continue to make balance decisions to support this outcome.

Increase and enhance green open space: Council will seek creative and innovative ways to provide new green spaces and will work with Government and private sector to achieve this outcome.

Early adopter of new Sustainability Initiatives: Burwood Council is an agile organisation that can adapt quickly to new technologies and policy. We will continue to seek opportunities for appropriate new sustainable practices.

Our Big Moves



Reduce, Reuse, Recycle



Reduce our carbon footprint



Green our environment



Community Led Participation



THEMES	Actions	
NATURAL ENVIRONMENT 	Trees	<ul style="list-style-type: none"> • Increase annual tree plantings on public and private land • Ensure diversity in our street tree species for longevity and ability to withstand pests, disease and temperature fluctuations • Responsible management of risks to street trees • Review development controls to protect existing trees and increase opportunities for new ones • Encourage the use of green walls and rooftop gardens or other publically accessible open spaces as an integrated feature of new built development
	Waterways/ Stormwater	<ul style="list-style-type: none"> • Continued involvement with Cooks River and Parramatta River Catchment Groups • Continue compliance initiatives to reduce pollution entering both Cooks and Parramatta Rivers • Participation in the Zero Litter to River initiative. • Investigate opportunities for stormwater harvesting and beneficial use
BUILT FUTURE 	Energy	<ul style="list-style-type: none"> • explore opportunities for community based renewable energy projects • Encourage and incentivise the switch to electric vehicles with appropriate policy, financial or other controls • education and promotion to the community, opportunities for energy efficiency and the switch to renewable energy generation • Explored opportunities for improved sustainable building design outcomes
	Water	<ul style="list-style-type: none"> • Provide sustainability education programs to reduce potable water consumption in the community • Communicate Sydney Water's restrictions and water efficiency initiatives • Keep up to date on new initiatives and technologies for water recycling which support a reduction in potable water consumption
	Waste	<ul style="list-style-type: none"> • introduce a FOGO (Food Organics Garden Organics) service to all residential properties in the LGA • continue to deliver community education programs focussing on waste avoidance, reuse, repair and recovery • continue to support The Bower's Rehoming and Collection Service • continue enforcement of illegal dumping and litter hotspots • increase waste diversion from landfill through new technologies and innovations • continue to deliver a street sweeping maintenance service • work with the commerical community to reduce business waste and improve recycling practices including reducing single use plastics

CONNECTED AND RESILIENT 	Climate Change	<ul style="list-style-type: none"> • Ensure resilience is integrated across Council through considering climate change risks in our daily operations • Work with the community on engagement and communication relating to climate risk and responsibilities • Keep up to date with latest science, research and best practice
	Sustainable Transport	<ul style="list-style-type: none"> • Collaborate with NSW Government and Sydney Metro in the delivery of a world class metro station precinct at Burwood North • Undertake planning to support the delivery of transit orientated communities • Review planning and development controls for electric vehicles and car share options • Implement vehicle charging stations • Deliver programs to encourage sustainable transport options • Installation of more cycleways to connect with surrounding cycle corridors
LEADING BURWOOD 	Sustainable Partnerships	<ul style="list-style-type: none"> • Continue to work with SSROC to showcase new sustainable technologies, policies and procedures • Work with external opportunities to enter into circular economy networks • Enter into a partnership with an external organisation to independently monitor achievement of key performance targets
	Energy	<ul style="list-style-type: none"> • Source energy suppliers with green power initiatives • Sign up and commit to the Cities Power Partnership program • Work with SSROC on energy saving programs/initiatives
	Water	<ul style="list-style-type: none"> • Prepare a Water Efficiency Plan • Continue to monitor our high water usage sites • Installation of rainwater tanks at Council facilities • Investigate stormwater harvesting opportunities • Ensure irrigation systems are efficient and investigate new innovations relating to irrigation • Work with Sydney Water
	Fleet	<ul style="list-style-type: none"> • Increasing hybrid vehicles in our fleet • Investigate electric bikes for staff use for local site visits/inspections • Explore electric vehicle options for our fleet • Reduce fuel consumption
	Sustainable Procurement	<ul style="list-style-type: none"> • Expand on sustainable procurement within the Procurement and Purchasing Policy • Add sustainable procurement consideration to all project briefs and tender evaluations • Continue collaboration with SSROC



Follow Council @BurwoodCouncil
www.burwood.nsw.gov.au

2 Conder St, Burwood NSW 2134
PO Box 240 Burwood NSW 1805

P 02 9911 9911
E council@burwood.nsw.gov.au



Burwood
Inc.1874